



# Turn on the safe side

Trusted for more than 25 years in designing, manufacturing and supplying large diameter bearings for wind turbines.



5MW single main bearing

## Wind Turbines

## Single Main Bearings

- from 250 kW to 5+ MW

## IMO Single Main Bearings

for shaft- and gearless direct drive wind turbine generators

- proven triple row cylindrical roller bearing design
- cost-efficient design – no main shaft required
- high load carrying capacity
- reliable and compact design
- simple and efficient mounting process
- single piece cages made from non-ferrous metals
- equipped with high performance sealing system
- fit for grease or oil lubrication

**IMO supplies to leading OEMs in wind turbine manufacturing.**

More than ...

- 36 GW delivered worldwide
- 75,000 IMO large diameter bearings for wind turbines in use
- 10% of the worldwide wind turbines are equipped with IMO bearings

**Your most cost-efficient choice over the entire service life.**





# IMO Single Main Bearings

- more than 2,500 single main bearings from 250 kW to 5 MW in service
- more than 1,000 IMO single main bearings in service for over 5 years
- 2 MW class operating in the field since 2001



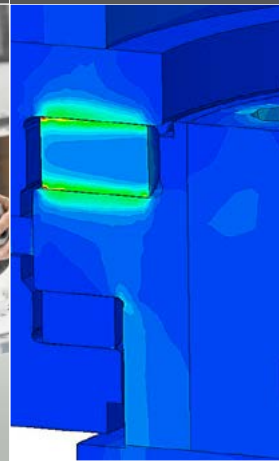
5 MW direct drive wind turbine generator



900 kW direct drive wind turbine generator



2 MW Single Main Bearing undergoing quality inspection



▲ Applying German engineering expertise, IMO designs slewing rings for wind energy installations using benchmark FE models.

IMO is certified according to the standards ISO 9001, ISO 14001 and OHSAS 18001.

## IMO

made in Gremsdorf, Germany

More than 25 years on your side.



### T-SOLID

pitch on the safe side

unfolds new perspectives for reduced cost of ownership, ensuring your return on investment!

Find more information at: [www.t-solid.com](http://www.t-solid.com)

#### Headquarters

IMO GmbH & Co. KG

Imostr. 1  
91350 Gremsdorf  
Germany

Tel. +49 9193 6395 - 3126

Fax +49 9193 6395 - 3140

[wind@imo.de](mailto:wind@imo.de)

#### Your contact in China

Germany IMO GmbH

Beijing Representative Office

Tel: +86 10 85296463

[china@imo.de](mailto:china@imo.de)

#### Your contact in the US

IMO USA Corp.

Tel. +1 843 779-5377

[americas@imo.us](mailto:americas@imo.us)

IMO follows the technical guidelines set by leading certifying authorities when calculating the slewing ring performance and life capabilities.



[www.imo-wind.com](http://www.imo-wind.com)